



FLS CANOPY SPECIFICATIONS SHEET

CANOPIES DESIGNED AND MANUFACTURED UNDER THE PROTECTION
OF PATENT NO. 5,299,395 ISSUED 4/5/1994

GENERAL NOTES

- ✓ Canopy design shall be single gable bolted frame
- ✓ Canopy shall extend out from building steel line 42". Building steel line is defined as the wall girt's outside edge.
- ✓ Canopy roof slope shall be 1:12
- ✓ 3/8" 16 UNC Grade 5, NC, plated hex head cap screws with nuts shall be used in the following connections: clip angles to existing building structural framing, vertical frame support channels, vertical frame support channel to horizontal support channel, center plates to framing channels
- ✓ Other framing connections shall be 1/4" 20 UNC grade 8, NC, plated hex head cap screws with nuts
- ✓ All material shall be new and free from defects

FRAME (Refer to circled numbers on Drawings 5001, 1001)

1. **Horizontal Channel**, 5½"x1¾"x14 GA galvanized steel channel (S-006-GV)
2. **Gable Channel-5**, 4"x1½"x16 GA galvanized steel channel (S-003-GV)
3. **Gable Channel-10**, 4"x1½" x 16 GA galvanized steel channel (S-004-GV)
4. **Connection Plates**, (2) 12 GA galvanized steel plates (SC-016-GV)
5. **Vertical Channel**, 5½"x1¾"x14 GA galvanized steel channel (S-001-GV)
6. **Connection Clip-Gable Channel**, 1¾"x3¾"x 3½"x14 GA galvanized steel angle (SC-015-GV)
7. **Connection Clip-Vertical Channel**, 3"x1½" x4" x12 GA galvanized steel angle (SC-011-GV)
8. **Hat Purlin**, 20 GA galvanized steel hat channel (S-005-GV)
9. **Connection Bracket**, 5 ¾" channel bracket 1¾" wide 10 GA galvanized steel. (SC-012-GV)
10. **Large Connection Bracket**, 5 ¾" channel bracket 3 ½" wide, 10 GA galvanized steel. (SC-013-GV)

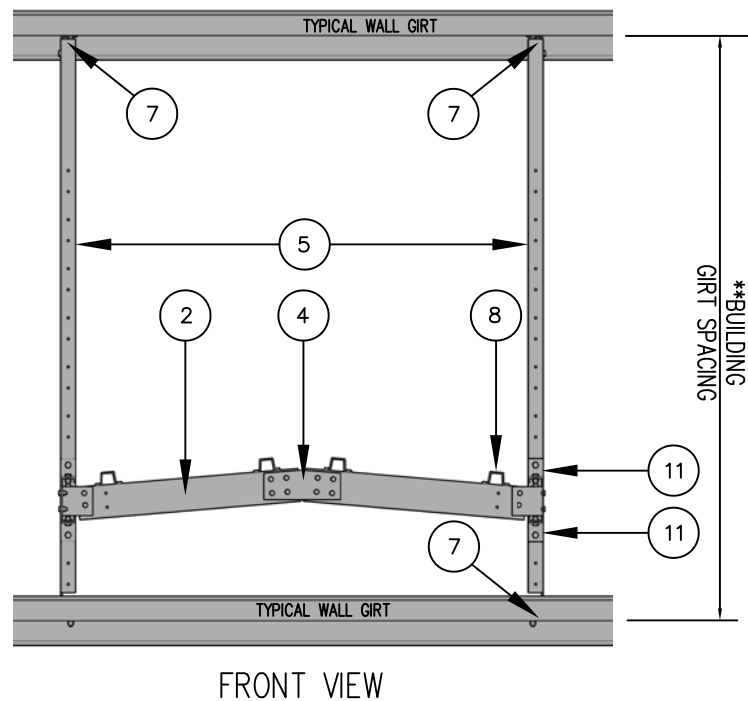
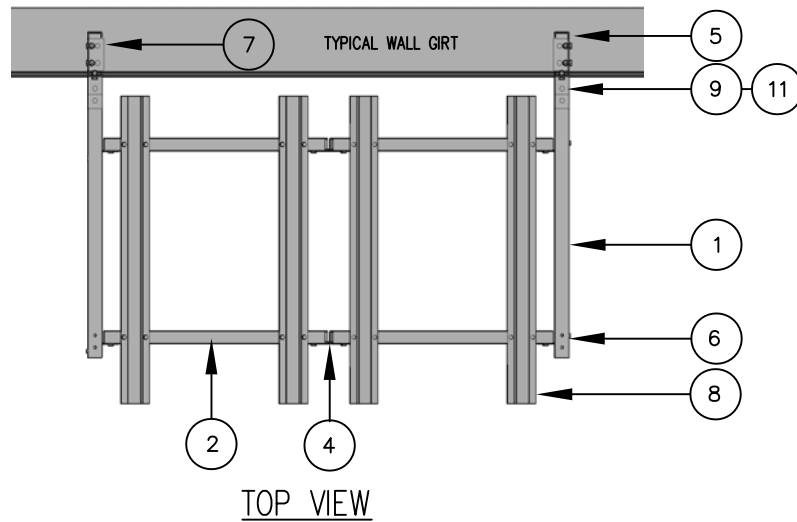
11. **Reinforcing Clip**, 2¼"x2¼"x1¾", 10 GA galvanized steel (SC-014-GV)
12. **Large Reinforcing Clip**, 2¼"x2¼"x3½", 10 GA galvanized steel (SC-017-GV)

COVER (Refer to circled numbers on Drawings 5002, 10002)

13. **Roof Sheet**, 26 GA, 50,000 PSI minimum yield steel (ASTM A446-72 Grade D) with G-90 Zinc Coating (ASTM Galvanized Specification A525) or Aluminum-Zinc Alloy coating (ASTM Specification A792) Kynar 500/Hylar 5000 Fluoropon factory colored
14. **Transition Flashing**, 26 GA, 50,000 PSI minimum yield steel Kynar 500/Hylar 5000 Fluoropon factory colored (T-036-00)
15. **Rake Trim**, 26 GA, 50,000 PSI minimum yield steel Kynar 500/Hylar 5000 Fluoropon factory colored (T-031-00)
16. **Soffit Panels**, white basket weave vented, 100% vinyl, lifetime limited warranty from Georgia Pacific (C-044-00)
17. **Eave Trim**, 26 GA, 50,000 PSI minimum yield steel Kynar 500/Hylar 5000 Fluoropon factory colored (T-032-00) or (T-033-00)
18. **Foam Inside Closure**, match configuration of roof panel to provide a weather tight seal at the top of side trim (M-062-00)
19. **Eave Filler**, 26 GA, 50,000 PSI minimum yield steel Kynar 500/Hylar 5000 Fluoropon factory colored (T-035-00)
20. **Peak Plate**, 26 GA, 50,000 PSI minimum yield steel Kynar 500/Hylar 5000 Fluoropon factory colored (T-034-00)

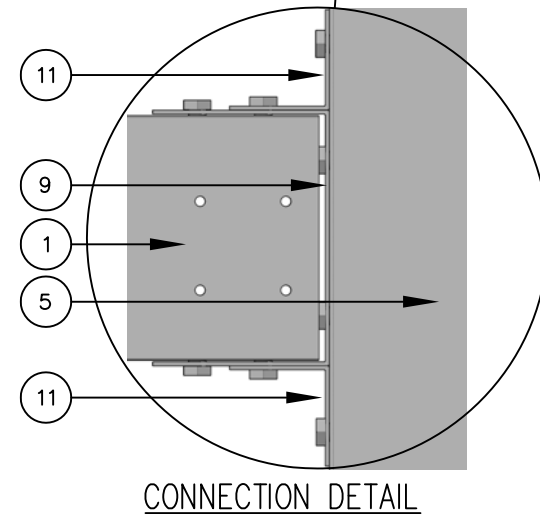
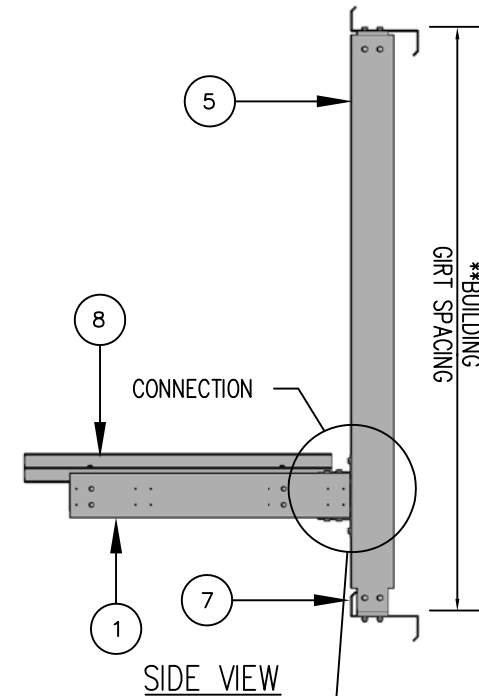
NOTE:

All roof sheets and trim shall be Kynar 500/Hylar 5000 Fluoropon colors. Colors shall be Ash Gray, Autumn Red, Matte Black, Charcoal, Clay, Evergreen, Ivory, Light Stone, Patrician Bronze, Regal White, Roman Blue, Surrey Beige and Tudor Brown.



**** NOTE: IF BUILDING GIRT SPACING IS 6' 1-1/4" OR LESS, STANDARD CANOPY MAY BE USED. IF BUILDING GIRT DIMENSION IS GREATER THAN 6' 1-1/4", ALTERNATE VERTICAL CHANNELS WILL BE UTILIZED AT AN ADDITIONAL COST.**

REVISIONS				
ZONE	REV.	DESCRIPTION	DATE	APPROVED



UNLESS OTHERWISE SPECIFIED:
DIMENSIONS ARE IN INCHES
TOLERANCES

DECIMALS ANGULAR
.XX € .05 € 0.5° Δ
.XXX € .010

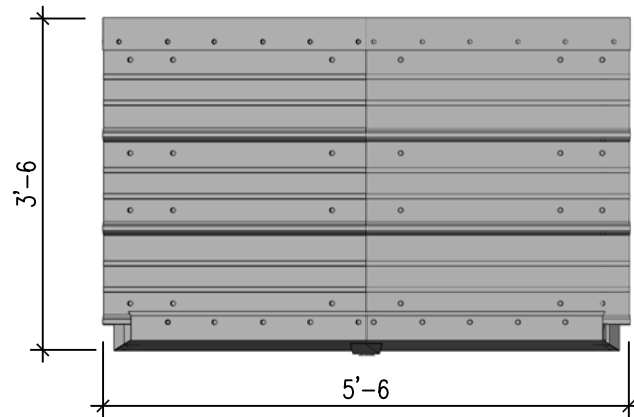
DO NOT SCALE DRAWING

FLS CANOPY, LLC

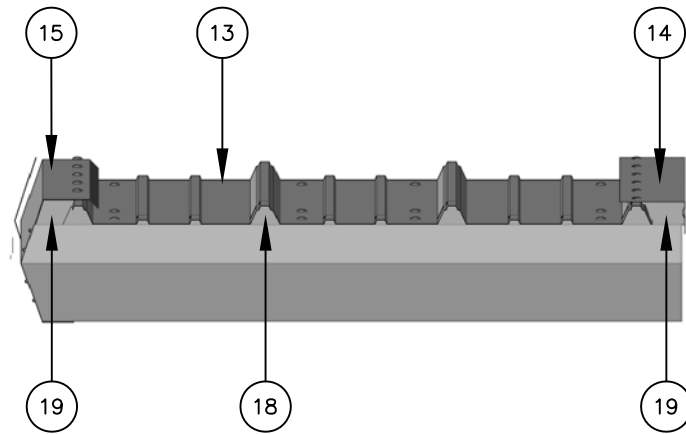
P.O. Box 1484 Brookfield, WI 53008-1484
t: 262.784.3390 www.FLScanopy.com

DRAWN	DS	DATE	8/2012	DWG.	5' CANOPY FRAME	
CHECKED		SCALE	N.T.S.	FSCM NO.	DWG. NO.	5001-12
DESIGN		SIZE		REV.	SHEET	OF
DESIGNED & MANUFACTURED UNDER PROTECTION OF PATENT NO. 5,299,395 ISSUED 4/5/94					1	1

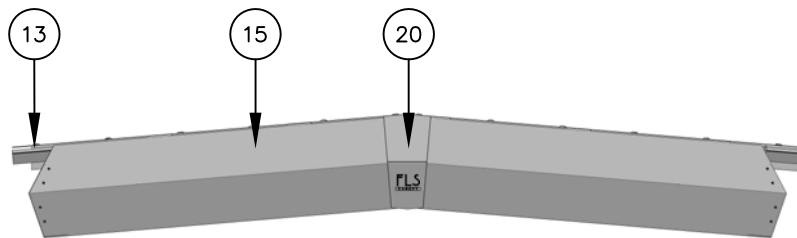
REVISIONS				
ZONE	REV.	DESCRIPTION	DATE	APPROVED



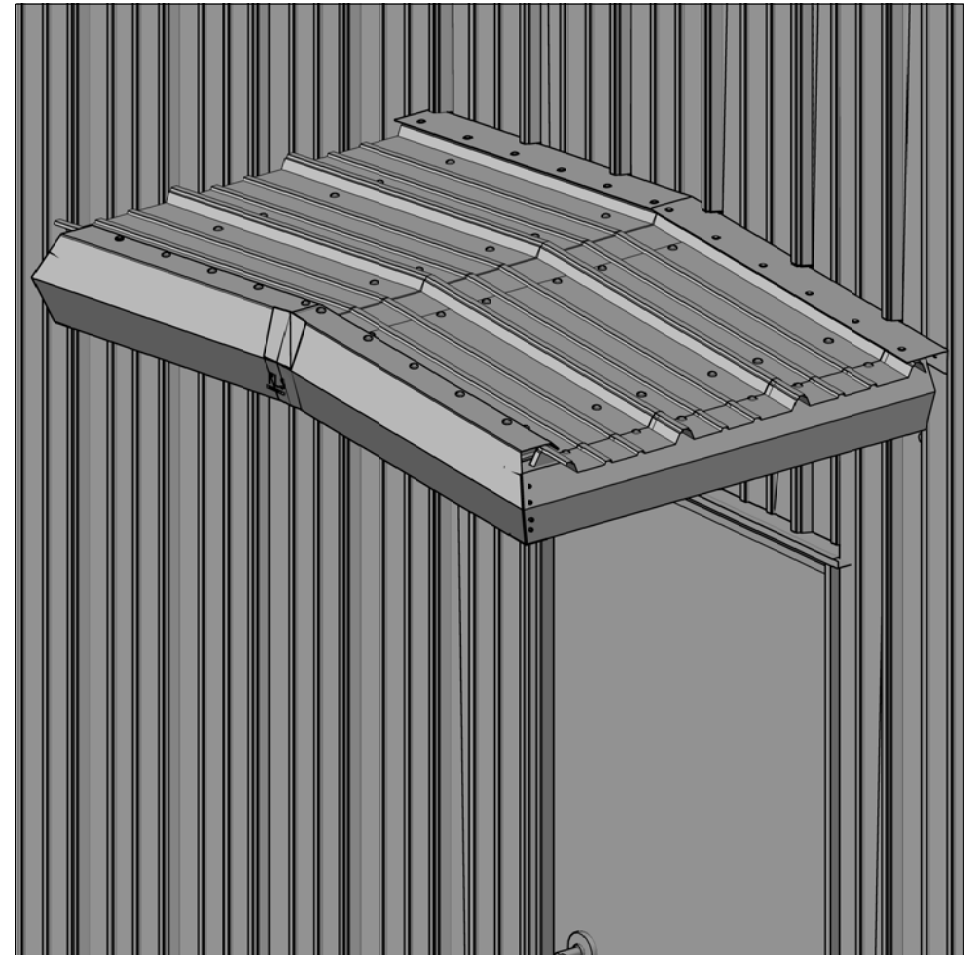
TOP VIEW



SIDE VIEW



FRONT VIEW



UNLESS OTHERWISE SPECIFIED:
DIMENSIONS ARE IN INCHES
TOLERANCES

DECIMALS ANGULAR
.XX € .05 € 0.5° Δ
.XXX € .010

DO NOT SCALE DRAWING

DRAWN DS	DATE 8/2012	DWG.	5' CANOPY COVER & TRIM	
CHECKED	SCALE N.T.S.	FSCM NO.	DWG. NO.	5002-12
DESIGN	SIZE	REV.	SHEET	1 OF 1

DESIGNED & MANUFACTURED UNDER PROTECTION OF PATENT NO. 5,299,395 ISSUED 4/5/94

FLS CANOPY, LLC

P.O. BOX 1484, BROOKFIELD, WI 53045

PH: (262) 784-3390

www.FLScanopy.com