



## FLS CANOPY SPECIFICATIONS SHEET

CANOPIES DESIGNED AND MANUFACTURED UNDER THE PROTECTION  
OF PATENT NO. 5,299,395 ISSUED 4/5/1994

### GENERAL NOTES

- ✓ Canopy design shall be single gable bolted frame
- ✓ Canopy shall extend out from building steel line 42". Building steel line is defined as the wall girt's outside edge.
- ✓ Canopy roof slope shall be 1:12
- ✓ 3/8" 16 UNC Grade 5, NC, plated hex head cap screws with nuts shall be used in the following connections: clip angles to existing building structural framing, vertical frame support channels, vertical frame support channel to horizontal support channel, center plates to framing channels
- ✓ Other framing connections shall be 1/4" 20 UNC grade 8, NC, plated hex head cap screws with nuts
- ✓ All material shall be new and free from defects

### FRAME (Refer to circled numbers on Drawings 5001, 1001)

1. **Horizontal Channel**, 5½"x1¾"x14 GA galvanized steel channel (S-006-GV)
2. **Gable Channel-5**, 4"x1½"x16 GA galvanized steel channel (S-003-GV)
3. **Gable Channel-10**, 4"x1½" x 16 GA galvanized steel channel (S-004-GV)
4. **Connection Plates**, (2) 12 GA galvanized steel plates (SC-016-GV)
5. **Vertical Channel**, 5½"x1¾"x14 GA galvanized steel channel (S-001-GV)
6. **Connection Clip-Gable Channel**, 1¾"x3¾"x 3½"x14 GA galvanized steel angle (SC-015-GV)
7. **Connection Clip-Vertical Channel**, 3"x1½" x4" x12 GA galvanized steel angle (SC-011-GV)
8. **Hat Purlin**, 20 GA galvanized steel hat channel (S-005-GV)
9. **Connection Bracket**, 5 ¾" channel bracket 1¾" wide 10 GA galvanized steel. (SC-012-GV)
10. **Large Connection Bracket**, 5 ¾" channel bracket 3 ½" wide, 10 GA galvanized steel. (SC-013-GV)

11. **Reinforcing Clip**, 2¼"x2¼"x1¾", 10 GA galvanized steel (SC-014-GV)
12. **Large Reinforcing Clip**, 2¼"x2¼"x3½", 10 GA galvanized steel (SC-017-GV)

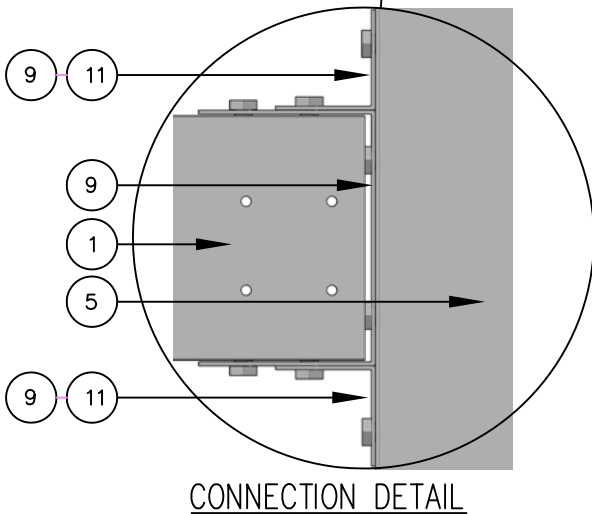
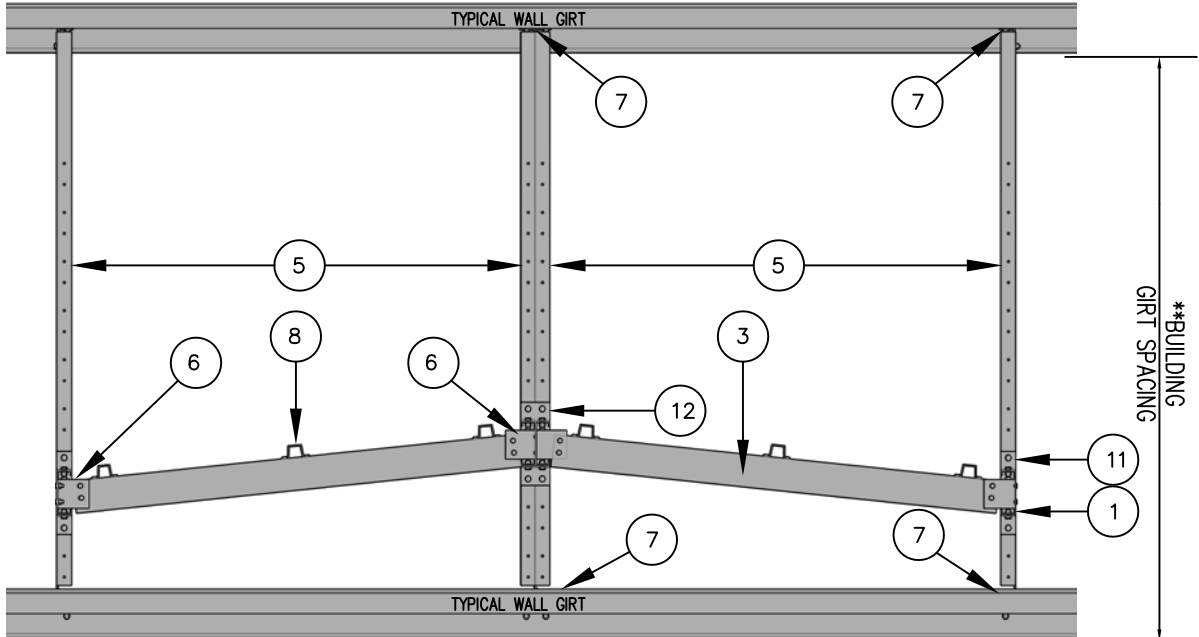
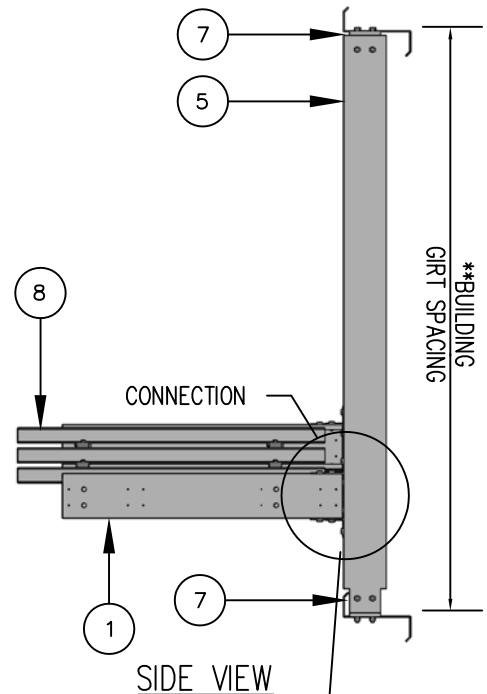
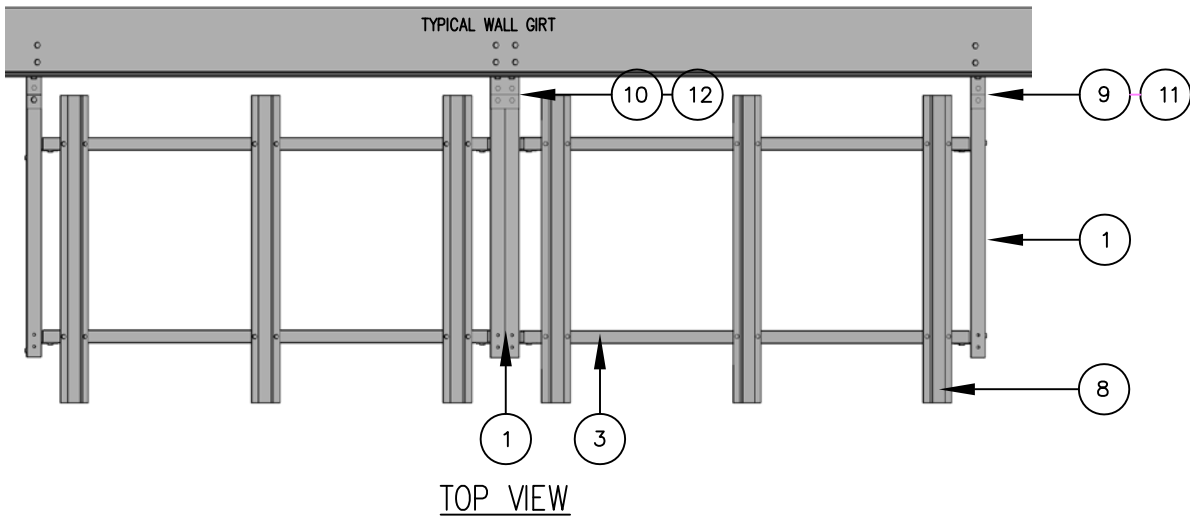
### COVER (Refer to circled numbers on Drawings 5002, 10002)

13. **Roof Sheet**, 26 GA, 50,000 PSI minimum yield steel (ASTM A446-72 Grade D) with G-90 Zinc Coating (ASTM Galvanized Specification A525) or Aluminum-Zinc Alloy coating (ASTM Specification A792) Kynar 500/Hylar 5000 Fluoropon factory colored
14. **Transition Flashing**, 26 GA, 50,000 PSI minimum yield steel Kynar 500/Hylar 5000 Fluoropon factory colored (T-036-00)
15. **Rake Trim**, 26 GA, 50,000 PSI minimum yield steel Kynar 500/Hylar 5000 Fluoropon factory colored (T-031-00)
16. **Soffit Panels**, white basket weave vented, 100% vinyl, lifetime limited warranty from Georgia Pacific (C-044-00)
17. **Eave Trim**, 26 GA, 50,000 PSI minimum yield steel Kynar 500/Hylar 5000 Fluoropon factory colored (T-032-00) or (T-033-00)
18. **Foam Inside Closure**, match configuration of roof panel to provide a weather tight seal at the top of side trim (M-062-00)
19. **Eave Filler**, 26 GA, 50,000 PSI minimum yield steel Kynar 500/Hylar 5000 Fluoropon factory colored (T-035-00)
20. **Peak Plate**, 26 GA, 50,000 PSI minimum yield steel Kynar 500/Hylar 5000 Fluoropon factory colored (T-034-00)

### NOTE:

All roof sheets and trim shall be Kynar 500/Hylar 5000 Fluoropon colors. Colors shall be Ash Gray, Autumn Red, Matte Black, Charcoal, Clay, Evergreen, Ivory, Light Stone, Patrician Bronze, Regal White, Roman Blue, Surrey Beige and Tudor Brown.

REVISIONS				
ZONE	REV.	DESCRIPTION	DATE	APPROVED



**\*\* NOTE: IF BUILDING GIRT SPACING IS 6' 1-1/4" OR LESS, STANDARD CANOPY MAY BE USED. IF BUILDING GIRT DIMENSION IS GREATER THAN 6' 1-1/4", ALTERNATE VERTICAL CHANNELS WILL BE UTILIZED AT AN ADDITIONAL COST.**

UNLESS OTHERWISE SPECIFIED:  
DIMENSIONS ARE IN INCHES  
TOLERANCES

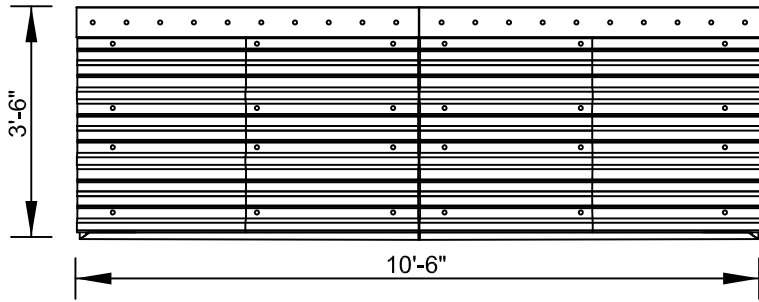
DECIMALS	ANGULAR
.XX € .05	€ 0.5' Δ
.XXX € .010	

DO NOT SCALE DRAWING

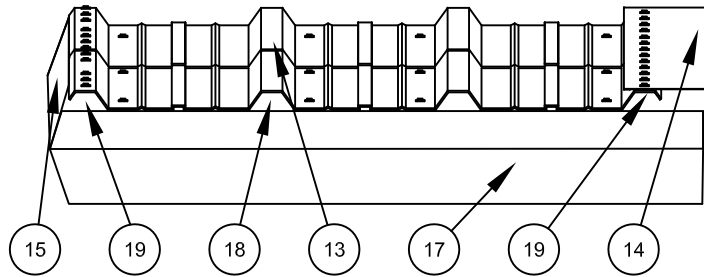
**FLS CANOPY, LLC**  
 PO Box 1484 Brookfield, WI 53008-1484  
 PH: (262) 784-3390  
 www.FLScanopy.com

DRAWN DS	DATE 8/2012	DWG. 10' CANOPY FRAME
CHECKED	SCALE N.T.S.	FSCM NO.
DESIGN	SIZE	REV.
		DWG. NO. 1001-12
		SHEET 1 OF 1

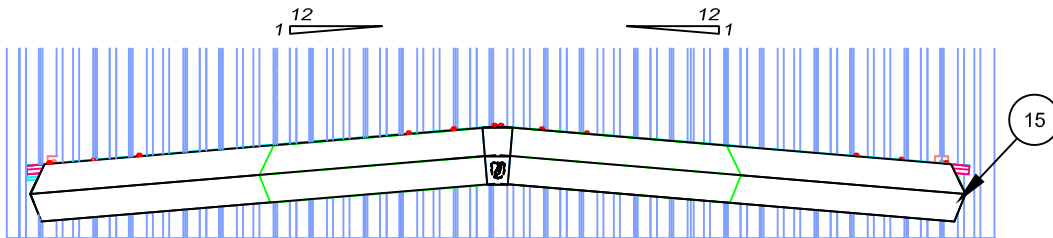
DESIGNED & MANUFACTURED UNDER PROTECTION OF PATENT NO. 5,299,395 ISSUED 4/5/94



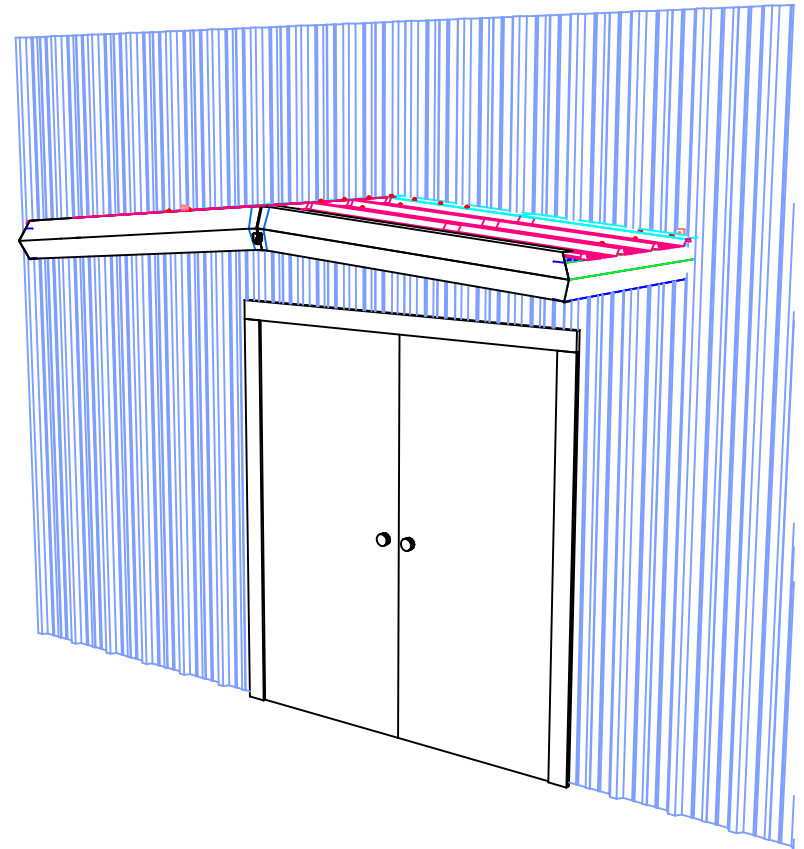
PLAN VIEW



SIDE VIEW



FRONT VIEW



3D VIEW

UNLESS OTHERWISE SPECIFIED:  
DIMENSIONS ARE IN INCHES  
TOLERANCES

DECIMALS      ANGULAR  
.XX € .05      € 0.5° ±  
.XXX € .010

DO NOT SCALE DRAWING

**FLS CANOPY, LLC**

PO Box 1484 Brookfield, WI 53008-1484

PH: (262) 784-3390

www.FLScanopy.com

DRAWN DS	DATE 8/2012	DWG. <b>10' CANOPY COVER &amp; TRIM</b>	DWG. NO. <b>1002-12</b>
CHECKED	SCALE N.T.S.	FSCM NO.	SHEET <b>1</b> OF <b>1</b>
DESIGN	SIZE	REV.	